

*Made in Japan*

**Commercial Models of  
 Instantaneous Water Heaters  
 that will meet any demands**

**High Energy  
 Efficiency**

**Huge Savings on  
 Running Costs**

**Compact Space  
 Saving Design**

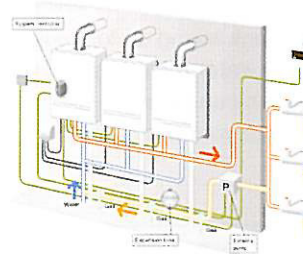
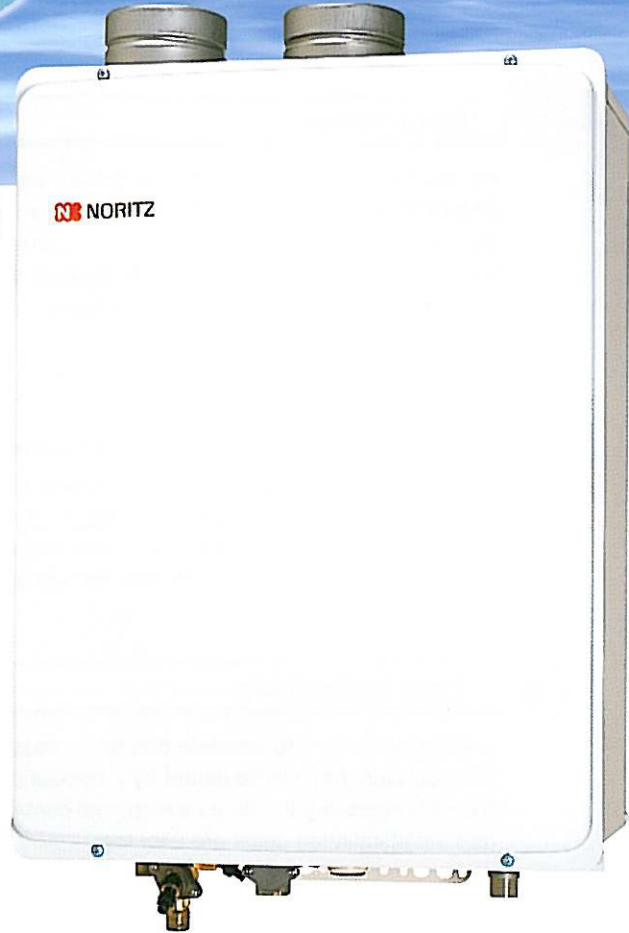
**Type 24 l/min & Type 32 l/min**

Perfect for use in small to middle-sized trades like cafés,  
 coiffeurs, restaurants, canteens, etc.

These Instantaneous Water Heaters are used in different types of facilities  
 like beauty parlours, spas, saunas, sport clubs etc.

**• 42 kW & 55 kW**

- Cascade
- Wall hung
- Amazingly small
- Extremely light
- Easy to install
- Accurate adjustable temperature settings from 37°C to 75°C
- Reduced risk of legionella formation
- Environmentally friendly



**NORITZ CORP.**

# Seven advantages of using our water heaters in cascade

## We offer easy to use and safe, high quality units!

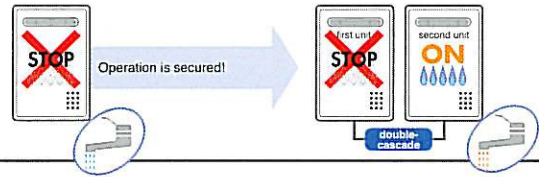
### 1 Secured Operation

Should one unit possibly fail the other one will act as a back up. You will never run out of hot water!

In the event of a sudden failure:

If two units are used in cascade you can rest assured.

Endless hotwater!

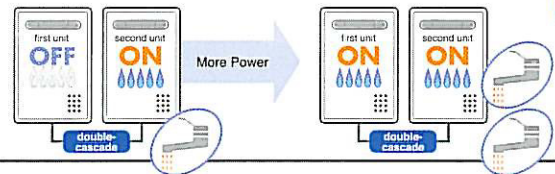


### 2 More Power

By using two units you can double the hot water capacity. And running multiple fixtures simultaneously won't restrict the supply. If you want to expand your business there is no need for a new hot water system because you can simply upgrade the one you have.

Two units operating at full can double your water supply! You can easily use hot water at several places in the building simultaneously!

Simultaneous usage: No problem!

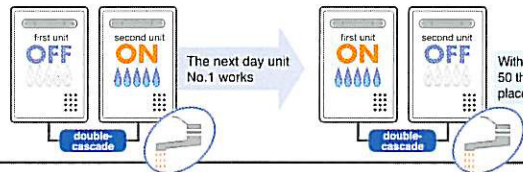


### 3 Rotation System

Due to a rotation system the units are used alternately which makes the single units extremely durable. Compared to the installation of only one single unit it will provide you with huge savings on running costs.

Every 24 hours the current main unit switches to another unit. This enables a longer lifespan for the two units in cascade compared to only one single unit.

Longer Lifetime!

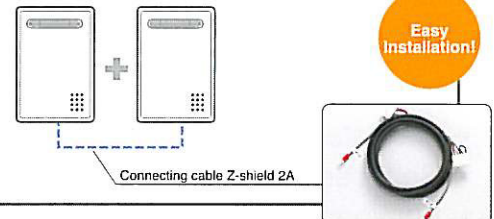


### 4 Easy Installation

Linking two units into cascade can be so easy. The units just have to be joined by a special cable. It is not necessary to buy a new special controller and the installation costs are very low.

Connected with one cable

Easy Installation!

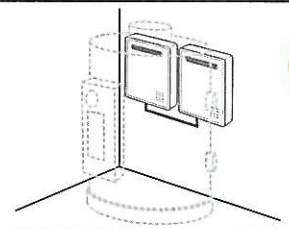


### 5 Space Saving

Is your bulky water tank taking up too much space? Using instantaneous water heaters saves you so much space, which can be used more effectively to suit your own needs.

Compact Space Saving Design

Compact!

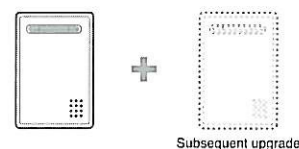


### 6 Subsequent upgrades possible

We recommend installing this water heater even if you are thinking about starting up with only one single unit. However, if your peak hot water requirements increase later on, it is easy to connect additional units.

Upgrading this system in the future is no problem.

Usage in cascade and subsequent upgrade possible!



### 7 Legionella-bacteria? No Chance!

In water tanks there is always the danger of legionella forming in the water. Using instantaneous water heaters reduces this risk because the water isn't stored. Only the amount needed is heated, providing huge savings with auto-ignition, and then used right away.